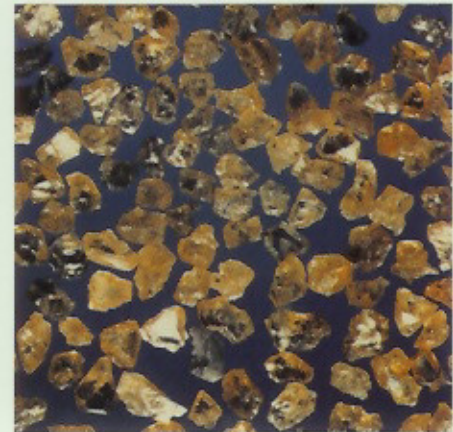
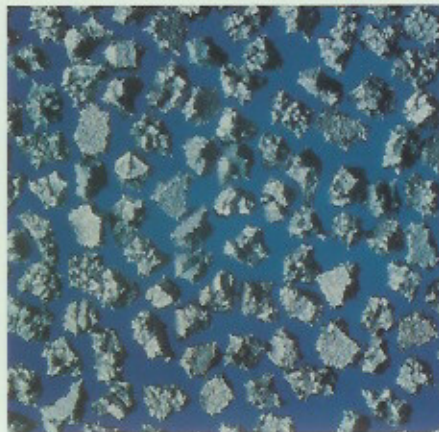
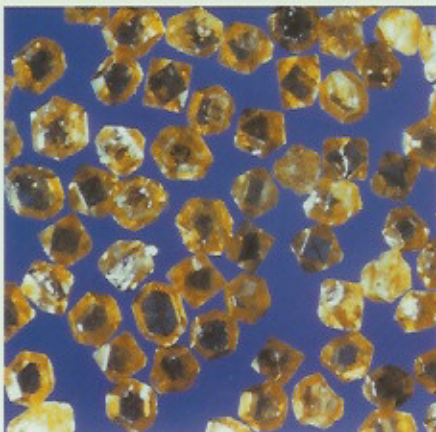


COMPARISON OF GRIT SYSTEMS

VERGELIJKINGSTABEL VOOR KORRELSYSTEMEN

μm	DIN 848	FEPA-STANDARD	US-MESH	μm
1250	D 1100			1190
1000	D 900	D 1182		1000
800	D 700	D 852		850
630	D 550			710
500	D 450	D 602		600
400	D 350	D 427		500
315	D 280			425
250	D 220		40	355
200	D 180	D 252	60	300
160	D 140		80	250
125	D 110	D 181	100	212
100	D 90	D 151	120	180
80	D 65	D 126	140	150
63	D 55	D 107	170	125
50	D 45	D 91	200	106
40	D 35	D 76	230	90
32	D 25	D 64	270	75
25		D 54	325	63
		D 46	400	53
				45
				38



First class diamondpowder for metal and resinbond diamond wheels and drills.

Eerste klas diamantpoeder voor metaal- en kunststofgebonden diamantschijven en -boren.