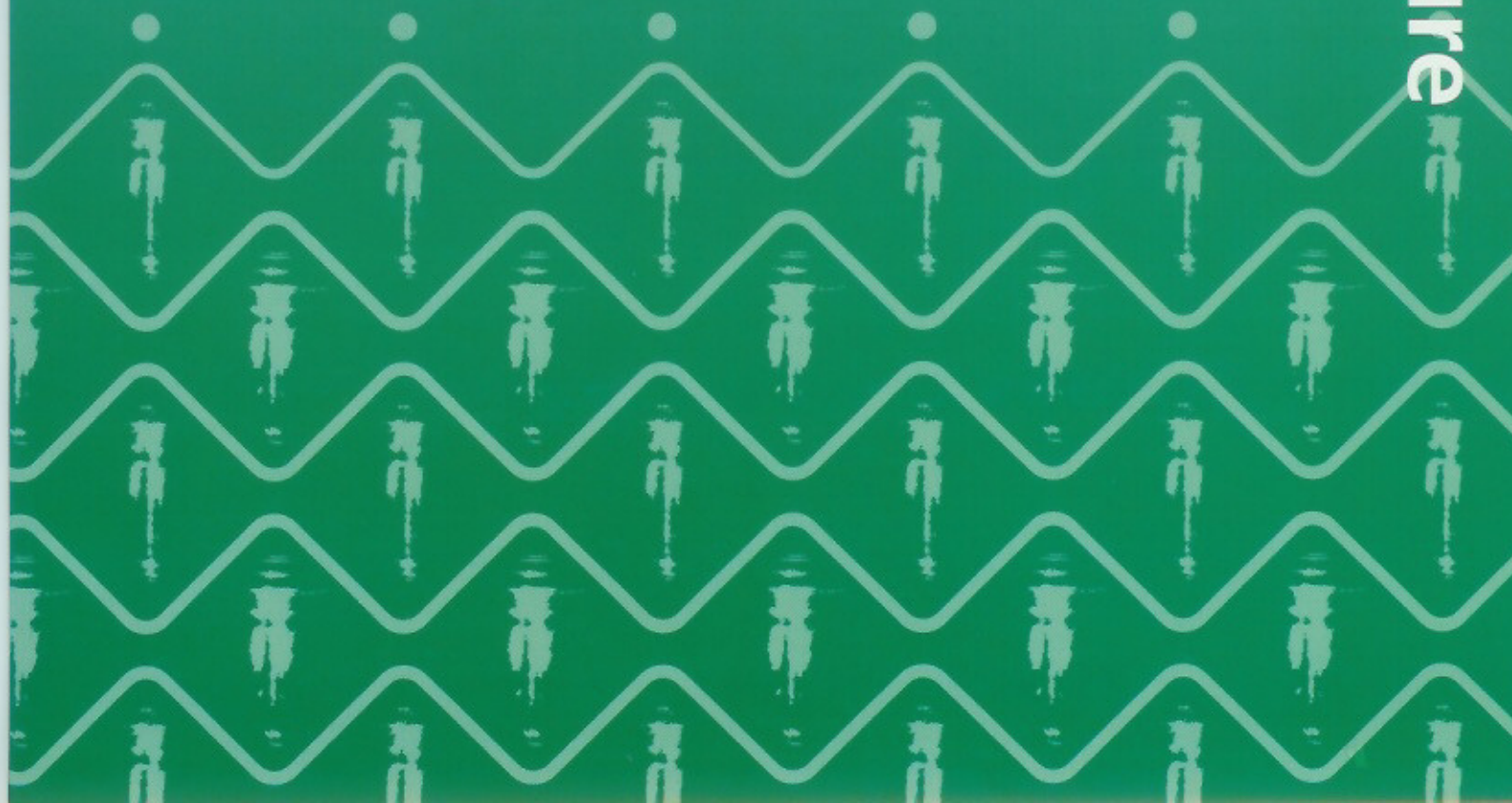
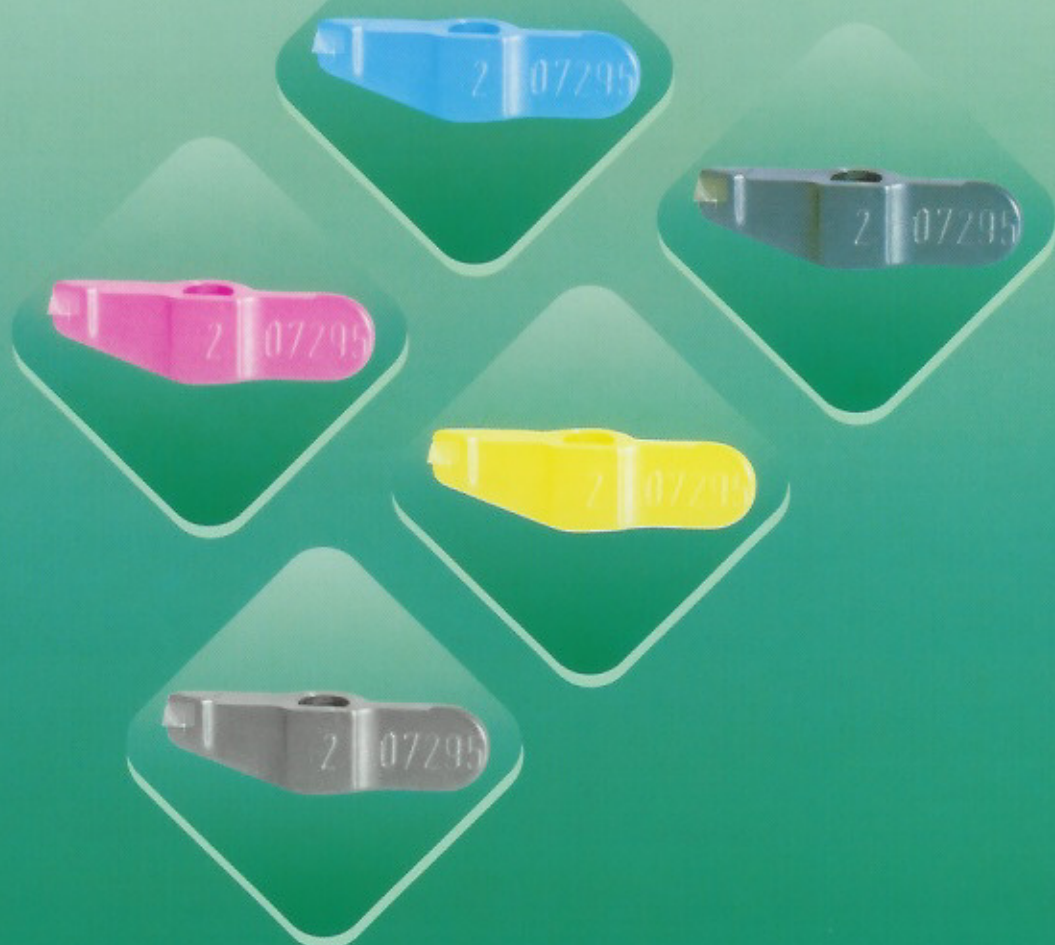


TECHNODIAMANT

Established since 1968

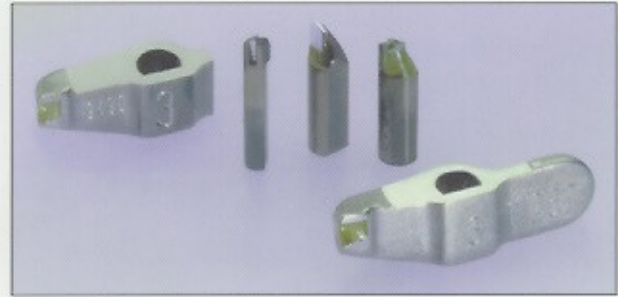
Diamond Tools for Gravure



TECHNODIAMANT

Engraving styli

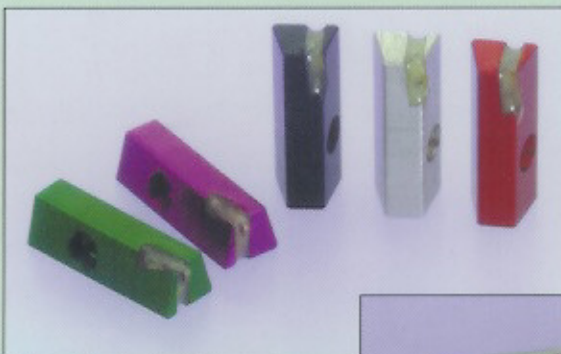
The engraving styli for both Hell and Ohio machines are produced on sophisticated diamond polishing machines, and are known to be of the highest quality. Strict Quality Control ensures that Technodiamant products are manufactured to meet or exceed product specifications.



ONE-WAY STYLI



Ohio-standard



Ohio-Vista



Hell-ONE-WAY

A specific development within Technodiamant is the so-called ONE-WAY stylus. These styli are developed for all types of Helioklischograph machines as well as for the Ohio engraving machines 700, 800 and 900 series (including styli for the Vista head). The quality is the same as that of repairable tools but the ONE-WAY tools are simply disposed of after they show signs of wear. ONE-WAY tools are available ex-stock, eliminating waiting time for repairs, shipment costs and duties.

In order to serve the customers better and to improve the engraving quality, Technodiamant's R&D constantly develops new ideas in co-operation with customers.



TECHNODIAMANT



Sliding shoes/spindles

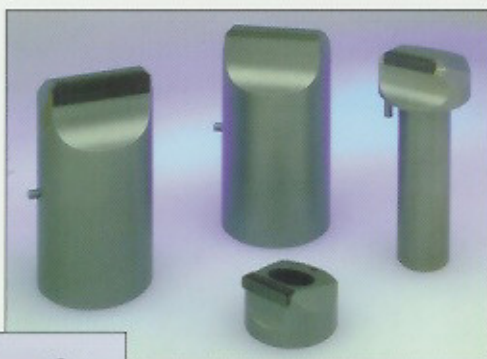
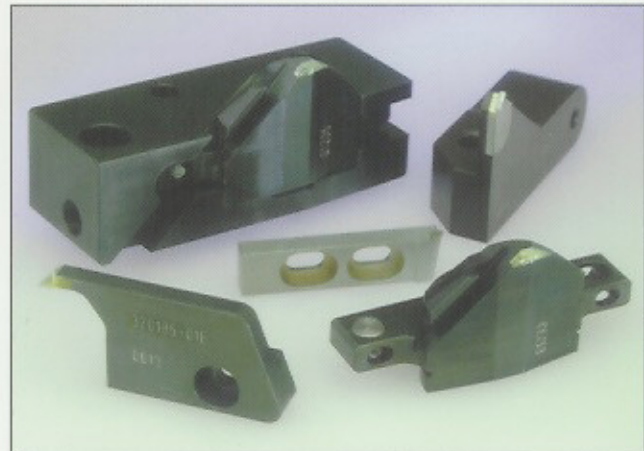
Both the sliding shoes for the Ohio machines and the sliding spindles for the HelioKlischograph are produced to very tight tolerances. Our laser equipment, combined with our ability to braze diamond directly to the shank material, enables us to manufacture highly accurate shoes and spindles.

These tools have a precise polished radius and a second smaller radius on the outside of the diamond in order to prevent the copper cylinder being scratched. To assure that this radius is concentric and according to the specifications of the machine manufacturers, special interference microscopes are used to document all new and repaired tools.

Burr-Cutters

Burr-Cutters normally run for a long time before needing repair. Therefore, it is very important that the diamonds are manufactured with the proper radius or exact flatness (depending on the type of machine). If the Burr-Cutter is not produced within strict dimensional tolerances, it may scratch the cylinder, even after many hours of seemingly acceptable use.

Technodiamant also manufactures the housing for the HelioKlischograph Burr-Cutter. If requested, Technodiamant will mount and adjust the Burr-Cutter in the housing and supply the full assembly.



PCD Pre-Cutters

Technodiamant manufactures Pre-Cutters for the Polishmaster and tools for the Kaspar Walter-CFM machines. The cutting edge on these tools is made of a special type of PCD (polycrystalline diamond). This material has outstanding wear-resistance, and is more resistant to shock as compared to natural and synthetic single crystal diamond.

Because Technodiamant uses advanced grinding machinery and highly skilled craftsmen, the tools for the Polishmaster, Kaspar Walter-CFM and a range of other diamond tools are produced with cutting edges of outstanding quality, consistency, and durability.

Besides the standard range of repairable cutting tools, ONE-WAY tools are available for the complete range of PCD tools as well. In some cases it is possible to quote non-standard products.