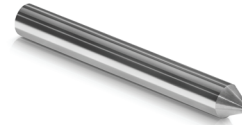


MILLING TOOLS


BALL MILL
CYLINDRICAL MILL
IOL MILL
Diamond Types

- CVD Pure Diamond (Poly-crystal)
- E-diamond synthetic (Dodec 110 orientation)
- MCC synthetic (Dodec 110 orientation)
- Mono-Die synthetic (Dodec 110 orientation)
- Natural (Dodec 110 orientation)
- Sumitomo synthetic (Cubic 100 orientation)

Yes

Yes

Yes

Yes

Yes

Yes

Yes

Yes

Yes

Yes

Yes

Yes

Yes

Yes

Yes

Yes

Yes

Minimum Radius

 0.1 mm
(Minimum tip)

 0.19 mm
(Minimum swing)

 0.135 mm
(Minimum swing Radius)

Maximum Radius

3.0 mm (tip)

 5.00 mm (swing)
CVD 0.60 mm
(swing diam. on request)

 Swing radius
on Request

Arc

90°

NA

NA

Included Angle (Top Angle)

NA

NA

NA

Rank Angle

0°

0°

0°

Front Clearance Angle

15°

15°

16°

Cutting Edge Waviness

2.0µm to 50nm

NA

NA

Setting accuracy of diamond to shank X-Plane

 ±0.01 mm
Or
±0.001mm

 ±0.01 mm
Or
±0.001mm

 ±0.01 mm
Or
±0.02 mm

Setting accuracy of diamond to shank Y-Plane

±0.002 mm

±0.002 mm

±0.01 mm

Tool Shank Material - Tungsten

Yes

Yes

Yes

Round Shank 3.0, 3.17, 4.0, 6.0 & 6.35 mm Ø, 35.0 mm minimum length suggested. Other shank types and sizes provided upon request.

Yes

Yes

 Ø2 - Ø3 - Ø3,17 -
Ø 4 mm